

## FORTHCOMING EVENTS

[www.seecc.co.uk/events.php](http://www.seecc.co.uk/events.php)

### Sunday 5 March

**Brunch Meet** at Abbey Parks Farm Bistro from 09.30

### Tuesday 7 March

**Committee Meeting** Saracen's Head Village Hall, 8pm

### Tuesday 14 March

#### Fish'n'chip night

At The Barge at Swineshead Bridge. Meet 7.00 for 7.30pm. Organised by Nigel & Joy Mann. £10.50 per head. Bookings to Joy on 01775 723856.



### Tuesday 11 April

#### Clubnight talk

**Gordon Ryall**, who was the coroner

at Peterborough from 1975 until 2012, is coming to Whaplode Manor Hotel to give us what is guaranteed to be an intriguing insight into his extensive experiences in his former role. Organised by Joy Mann. £3 per head. 7.45 for 8pm.



### Sunday 23 April

#### Drive It Day Run

Our annual excursion for FBHVC 'Drive it Day' will start at Birchgrove Garden Centre in Pinchbeck. The Run will then head, via a stop at Wymondham Windmill, to the Foxton Locks Inn in Leicestershire where Sunday lunch will be available. Organised by Steve Saunders & Liz Bollons. **Full details attached with this newsletter.**



### Tuesday 9 May

#### Clubnight run

Organised by Charles & Celine Cornish, our first evening run of the campaign will meet at The Vista in Spalding from 6.45pm and head to the Robin Hood & Little John Inn at Aslackby near Bourne. Menu on page 3. Choices to [charlescornish67@gmail.com](mailto:charlescornish67@gmail.com) by 2<sup>nd</sup> May please.



## CHAIR'S CHATTER

**Adrian Cunnington**



Apologies for the late issue of this month's newsletter and the brevity; I am afraid work commitments have limited my time for preparation.

Last month our highlight was the clubnight meeting held at Peterborough Greyhounds, where our evening included the first (and only?) running of the Spalding Classic Car Club Stakes. The results are shown on page 2. Suffice to say my ability to forecast the winners of greyhound races was directly proportional to the amount of dry weather we experienced that day. It bucketed down... Many thanks to everyone who turned out for a fun evening, some nice food and, for some, a modest profit on the night. Special thanks to Jenny Overson who organised the trip.

This month we have a quarterly brunch meet and our clubnight is a fish 'n' chip night at The Barge. The latter looks set to establish a new record for one of our Tuesday evening gatherings with almost 50 people already booked in. If you want to join us, please be quick as places are limited.

Finally, I would like to flag up a number of events which are coming up during the year as now is the time to be thinking about getting your name down for them. In addition of course there will be our not-to-be-missed clubnights. Joy Mann has kindly agreed to act as a contact point for those wishing to partake in any of the shows. Contact her at [jmann@eemc.co.uk](mailto:jmann@eemc.co.uk). Please check the website for details of other events as they become available.

Major events coming up include:

- 23<sup>rd</sup> April : Drive It Day to the Foxton Locks Inn
- 30<sup>th</sup> April : Club stand at Springfields Show, Spalding
- 11<sup>th</sup> June : SEECC Annual Classic Run to Belvoir Castle
- 18<sup>th</sup> June : Club stand at Bourne Classic Car Show
- 25<sup>th</sup> June : SEECC Charity Social, Moulton
- 2<sup>nd</sup> July : Club stand at Baston Classic Car Show
- 13<sup>th</sup> August : Club stand at Boston Classic Car Show
- 27<sup>th</sup> August: Stamford Classic Car Show
- 17<sup>th</sup> – 21<sup>st</sup> September: Trip to the Peak District

I look forward to seeing you at a Club event soon.



SEECC News is edited by Adrian Cunnington — [seecc@btinternet.com](mailto:seecc@btinternet.com) ☎ 01775 761520

Find us on **Twitter @spaldingclassic** and **Facebook at Spalding & East Elloe Classic Car Club**

Spalding & East Elloe Classic Car Club — a specialist section of East Elloe Motor Club Ltd — [www.spaldingclassiccars.co.uk](http://www.spaldingclassiccars.co.uk)  
Registered office: 33 Grange Drive, Spalding, Lincolnshire. PE11 2DX. A company limited by guarantee, registered in England No 1874444

## NEW MEMBERS

A warm welcome to  
**Julie Baxter**  
**Shirley Baxter**  
**David Brooks**

# HELLO



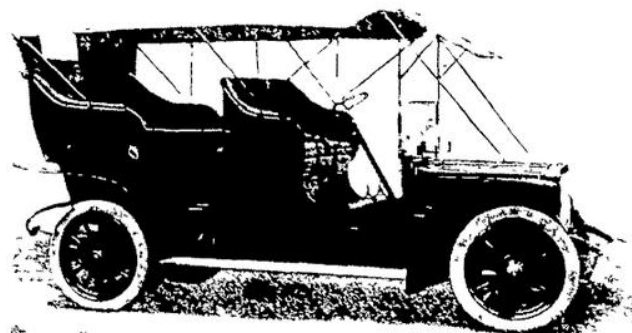
## MARCH MUTTERINGS

### PARTS DOWN UNDER IDENTIFIED

You will recall that last month we asked for help for this member of the **Wanganui Classic Car Club** in New Zealand in identifying parts of a car he has owned since 1970.



Various suggestions came in from around the globe but Barry Aistrup informs me that the car has been identified as a 1908 Decauville. Here's a bit of detail of you've never heard of one:



The 16/20 4-cylinder Decauville car was manufactured by the well-known French firm of "Societe Nouvelle des Etablissements Decauville Aine," which was founded in 1854, and has the reputation of being one of the leading companies manufacturing automobiles in France. The New Zealand Farmers' Motor Co., Ltd., Feilding, are the sole concessionaires in the Dominion for this high-class car. This particular car is fitted with H.T. magneto ignition and coil. The handsome Roi de Belge body is beautifully upholstered in light green leather, with a double glass wind screen and large canopy hood, it looks particularly striking.

## SUBSCRIPTIONS: LAST CALL

This will be your last edition of the SEECC Newsletter unless you **RENEW** your **SUBSCRIPTION**, if you have yet to do so... Membership costs just:

**Single membership £12**

**Joint membership (couple at the same address) £18**

Postal newsletter supplement £8

To renew, complete the form on the website and send it with your cheque made payable to *East Elloe Motor Club Ltd* to Joy Mann, 33 Grange Drive, Spalding, PE11 2DX. Or call Joy on 01775 725856.

If you've decided not to renew for a specific reason to do with the Club, please let us know why by emailing [seeccc@btinternet.com](mailto:seeccc@btinternet.com). Thank you.



## PETERBOROUGH GREYHOUNDS

Wednesday 15<sup>th</sup> February

22.03 435m Flat (A2)		1st £108, Others £20 Total £188 (BGRF CONTRIBUTION £30)						
Spalding Classic Car Club Stakes								
LIOGARBH GER	5	3111	1st	3/4	Mid,Led2,(HT)	33.0	6/4F	26.76
Cabriol Madison	3	1222	2nd	3/4	LdTBmpInRr2nd,(HT)	32.9	2/1	27.01
Elevenightfifty	6	5543	3rd	5/4	Wide,VWide2nd,(HT)	27.7	4/1	27.17
Ballymac Pandara	1	2455	4th	5/4	Rls,Bmp2,(HT)	24.5	9/2	27.21
Inislosky Monach	2	4334	5th	17/4	EasedRnIn,FinCrmp,	30.5	6/1	28.16
Vacant	4							
OFF 22.07.35 The Pricey's Right Syndicate							David Pruhs	-20
Withdrawals: Tyford Bloom - OffColr							SPBook:	126



## LONDON MOTOR SHOW

The London Motor Show organisers have advised it is running again following a highly successful event last year with over 25,000 visitors. The show is intended for all car enthusiasts and we have been offered a 10% discount on tickets.

A special food and beverage area for Club members will also be on hand as a good meeting point with the added benefit of reduced rates on catering.

To use this special rate, members just need to add the promo code EASTELLOE when buying tickets online from [www.thelondonmotorshow.co.uk](http://www.thelondonmotorshow.co.uk).



## AUTUMN TRIP: PEAK DISTRICT

As outlined last month, Brian Patmore has arranged a 5 day trip for members to the Peak District from 17-21 September.

**Full details are now attached with this newsletter and on the website.**

Payment of a £50 deposit by 30 April is all that's needed to secure your place. Contact Brian on 01945 420699 or, alternatively, you can email him at: [brian.j.patmore@googlemail.com](mailto:brian.j.patmore@googlemail.com).



# 2017 CLUB CALENDAR

MINOR UPDATES FOR MARCH. RED TEXT INDICATES EVENTS NOW BOOKING



March	5 Su	Brunch meet: Abbey Parks Farm	A & C Cunnington	East Heckington
	14 Tu	Clubnight: fish 'n' chip night	N & J Mann	Barge, Swineshead
April	11 Tu	Clubnight talk by Gordon Ryall	J Mann	Whaplode Manor
	23 Su	DRIVE IT DAY RUN: <b>BOOK NOW</b>	S Saunders/L Bollons	Leicestershire
	30 Su	<b>Springfields Show: Club stand</b>	Committee	Spalding
May	9 Tu	Clubnight run	C & C Cornish	Spalding > Aslackby
	21-24 Su/We	SPRING TRIP	J & T Overson	Yorkshire
	30 Tu	Tuesday noggin and natter	Committee	tbc
June	11 Su	SEECCC CLASSIC CAR RUN: <b>BOOK NOW</b>	B & E Aistrup	Spalding>Belvoir
	13 Tu	Clubnight visit?	tbc	tbc
	17/18 Sa/Su	Holbeach Country Fayre	S Saunders	Holbeach
	18 Su	<b>Bourne Classic Car Show</b>	J Mann	Wellhead, Bourne
	25 Su	Charity social event	Committee	Moulton
July	2 Su	Baston Show	Committee	Baston Field
	11 Tu	Clubnight: water taxi cruise	T Carter/C Cornish	R. Welland, Spalding
	29 Sa	Brunch meet	A & C Cunnington	tbc
August	8 Tu	Clubnight run	J & P Pollard	tbc
	13 Su	<b>Boston CCC Show</b>	Committee	Kirton
	20 Su	NORFOLK TRUNDLE	J & P Read	Norfolk
	27 Su	<b>Stamford Classic Car Show</b>	Committee	Stamford
September	3 Su	Moulton Show?	S Saunders	Moulton Park
	12 Tu	Clubnight run	J & H Sidebottom	tbc
	17-21 Su-Th	AUTUMN TRIP : <b>BOOK NOW</b>	B Patmore	Peak District
October	1 Su	Brunch meet	tbc	tbc
	10 Tu	Clubnight	tbc	tbc
November	14 Tu	Clubnight: pub meal	tbc	tbc
December	5 Tu	AGM	Committee	WMH
	10 Su	Christmas lunch	J Mann	tbc
OPTIONS FOR FURTHER VISITS ETC TO BE ADDED ON AN AD HOC BASIS				

More information on our website [Events page](#) as it becomes available.  
Also for non-SEECCC events we know of.

